



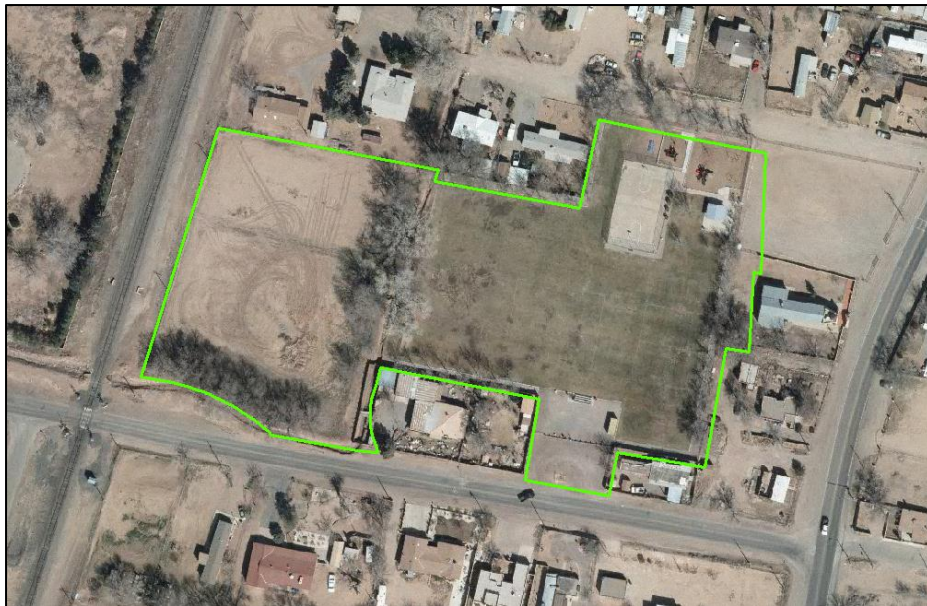
**SPONSOR:**

**BILL:** \_\_\_\_\_

## **La Ladera Park Improvements**

\$300,000 is requested to plan, design and construct the undeveloped, 2-acre western half of La Ladera Park located in the North Valley of Bernalillo County. The east half of La Ladera Park was originally developed in the 1980s and includes a shade structure, basketball court, playground and several soccer fields that are used by youth soccer teams. The west half of the park was never developed because it is landlocked by private property, railroad right-of-way, and two irrigation ditches.

Bernalillo County proposes to design and construct a crossing of the Los Ranchos Ditch to enable access vehicle from Los Ranchos Rd. to the undeveloped west half of La Ladera Park. The park itself would include a location for materials and equipment storage for Land Management crews and a parking area for youth soccer participants and spectators. Currently, the neighboring streets of this park can be subject to heavy parking volumes during games. Improving the west of La Ladera park will provide relief to surrounding neighbors from this disturbance.



Fifty First Legislature, First Session, 2013

AR 2012-103, # 18B  
House #  
Senate #  
Commission #